



CAROLINE COUNTY

Program Open Space Annual Program Plan FY2018

Submitted on June 15, 2017

Prepared and submitted in accordance with state mandates and guidelines as documented in the Program Open Space Grants Manual. This Annual Program conforms to the Caroline County Comprehensive Plan and the 2016 Caroline County Land Preservation Parks and Recreation Plan.

Susan C. Simmons
Caroline County Recreation & Parks Director

Samantha Parker
Caroline County Recreation & Parks Advisory Board President

The 2018-19 Annual Program presents a detailed plan for Caroline County's investment of Program Open Space to expand and rehabilitate existing public park facilities within the exclusive jurisdiction of the county and/or in partnership with incorporated municipalities. The Program is consistent with the 2016 Caroline County Land Preservation, Parks and Recreation Plan (LPPRP), scheduled for amendment into the County Comprehensive Land Use Plan on June 27, 2017. Both the LPPRP and this Annual Program are presented in partnership with the Caroline County Recreation and Parks Citizen Advisory Board.

The projects incorporated herein are also based on the following factors:

1. It is an on-going project that has been included in the previous plan;
2. It is a local POS allocation recommendation by the County to support park development efforts by an incorporated municipality and will likely be leveraged into a future Community Parks and Playgrounds grant request by the municipality;
3. The included project establishes a general distribution balance of POS and /or project development support by county professionals over the geographic county regions;
4. The county anticipates or acknowledges mounting support from the community, local and county elected officials and/or private funding or community partnership support for a specific project.

Although in total, the projects in the FY2018 Program Plan exceed the grant funding resources available to the county, the completion date projected for each project is noted in within each project title. Each of these projects are specifically referenced in the 2016 LPPRP in Chapter III in section G. *Capital Improvement Acquisition Priorities* (pp.60) and in Table III-6 Priorities for Rehabilitation, Development and Land Acquisition, 2017-2025 (pp. xx).

Project Summary Table: FY2018-19

LPPRP Inventory Reference ¹	Project Location & Name	Project Acreage	Funding Sources				Development Share
			Local POS	General Fund	Other	TOTAL	
83	North County Regional Park (FY19)	207	180,000	10,000	10,000	200,000	
70	South County Regional Athletic Complex (FY18)	35	206,910		22,990	229,900	
30	Goldsboro Community Park (FY19)	1.27	18,000		2,000	20,000	

¹ The inventory reference corresponds with the regional map identifier in the 2017 LPPRP. These maps are included as a reference at the end of this document.

73	Templeville Community Park (FY19)	0.8	15,000		5,000	20,000		
12	Choptank Nature Park (FY19)	12	30,000	1,000	2,000	33,000		
10	Chambers Park (FY19)	16	20,000		2,000	22,000		
65	Ridgely Athletic Field Complex (FY20)	31.7	25,000		2,500	27,500		
TOTAL:		303.77	494,9100	11,000	46,490	552,400		
Land Preservation, Parks & Recreation Master Plan (FY 18) (FY 19)								
		0	25,000			50,000	Acquisition Share	
TOTAL:			50,000			50,000		
POS Allocation Encumbered & Active								
LPPRP Inventory Reference ²	Project Location & Name	Project Acreage	Funding Sources				TOTAL	
			Local POS	General Fund	Other			
68	Sharp Road Park (FY18) #6484-05-185 #6529-05-0188	24.2	15,000 197,500		5,000 0	217,500		
54	Marydel Community Park (FY18) #6573-5-194	25	72,250	8,500		85,000		
63	Preston School Park (FY 18) #6571-5-192	13	20,700		6,900	27,600	Development Share	
26	Federalburg Elementary School Ballfield (FY18) #6643-5-196	8.9	22,500		2,500	25,000		
TOTAL:		71.1	327,950	8,500	14,400	355,100		

² The Inventory reference corresponds with the regional map identifier in the 2017 LPPRP. These maps are included as a reference at the end of this document.

Project Descriptions

83 NORTH COUNTY REGIONAL PARK (County Tax Map 15: Parcel 135)

Development of the 207 acre waterfront parcel located north of Greensboro on the Upper Choptank River includes conservation design and construction to stabilize existing ditch erosion, completion of a forest and natural resources management plan, expansion of the preliminary public access points to the natural walking trails (Parking, wayfinding signs, limited trail construction) and a master plan process that balances future recreation asset development with resource protection and the community/agency capacity to manage the park.



Figure 1 North County Regional Park

70 SOUTH COUNTY REGIONAL PARK (County Tax Map 54: Parcel 88)

Development scope includes perimeter trail development, and a pavilion/concession facility with utility infrastructure for future restrooms. This 73-acre site was acquired with POS funds in 2001. The multipurpose fields support league play for soccer and youth lacrosse.



Figure 2: South County Regional Park

30 GOLDSBORO COMMUNITY PARK, TOWN OF GOLDSBORO

(County Tax map 11A; parcel 66)

Restoration of paved court basketball and tennis court surfaces in FY2017/18 for a park that serves a rural village of 450+ includes the partnership of the Goldsboro Town Council and may be combined with a 2018 Community Parks & Playground application



Figure 3: Goldsboro Park

73 TEMPLEVILLE PARK, TOWN OF TEMPLEVILLE (County Tax map 2; parcel 72)

The Town of currently coordinating the construction design through a Watershed Assistance Grant via the Chesapeake Bay Trust to ultimately improve pond conditions, water quality, storm water management and BMP practices both on-site and with surrounding property owners. The .8-acre neighborhood park serves a village of under 50 people. It was established in 1970 and has not been improved in over 30 years.



Figure 4: Templeville Park

12 CHOPTANK NATURE PARK

(Caroline Tax Map 58: p.4)

This 12.6-acre parcel shall include the phased development of walking trail and a wildlife viewing station around the dredge disposal berms. The final master development plan is supported by consistent input from the Choptank Village residents, and a partnership with the Caroline Historical Society for the location is a historic building – eventually an interpretive center for the site and the Underground Railroad. This site is within the Critical Area.

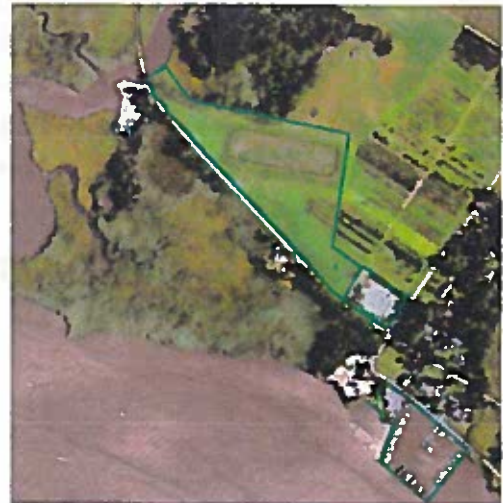


Figure 5: Choptank Nature Park and Choptank Marina

10 CHAMBERS PARK, TOWN OF FEDERALSBURG

In active operation since it was established in 1979, Chambers Park requires capital renovation of its historic features (log cabin) and a redesign of traffic and facility features to optimize public access, public safety and recreation use. Local POS investment will likely be combined with an FY19/20 application for Community Parks & Playgrounds funding for final construction.



Figure 6: Chambers Community Park

LAND PRESERVATION, PARKS AND RECREATION MASTER PLAN

The 2016 Caroline County Plan will be amended to the County Comprehensive Land Use Plan by July 1, 2017. To continue the implementation of the park and preservation planning systems that will inform the development of the 2021 Plan, the county proposes the encumbrance of \$25K from its land acquisition allocation account. The FY2018 POS investment will focus on the following objectives:

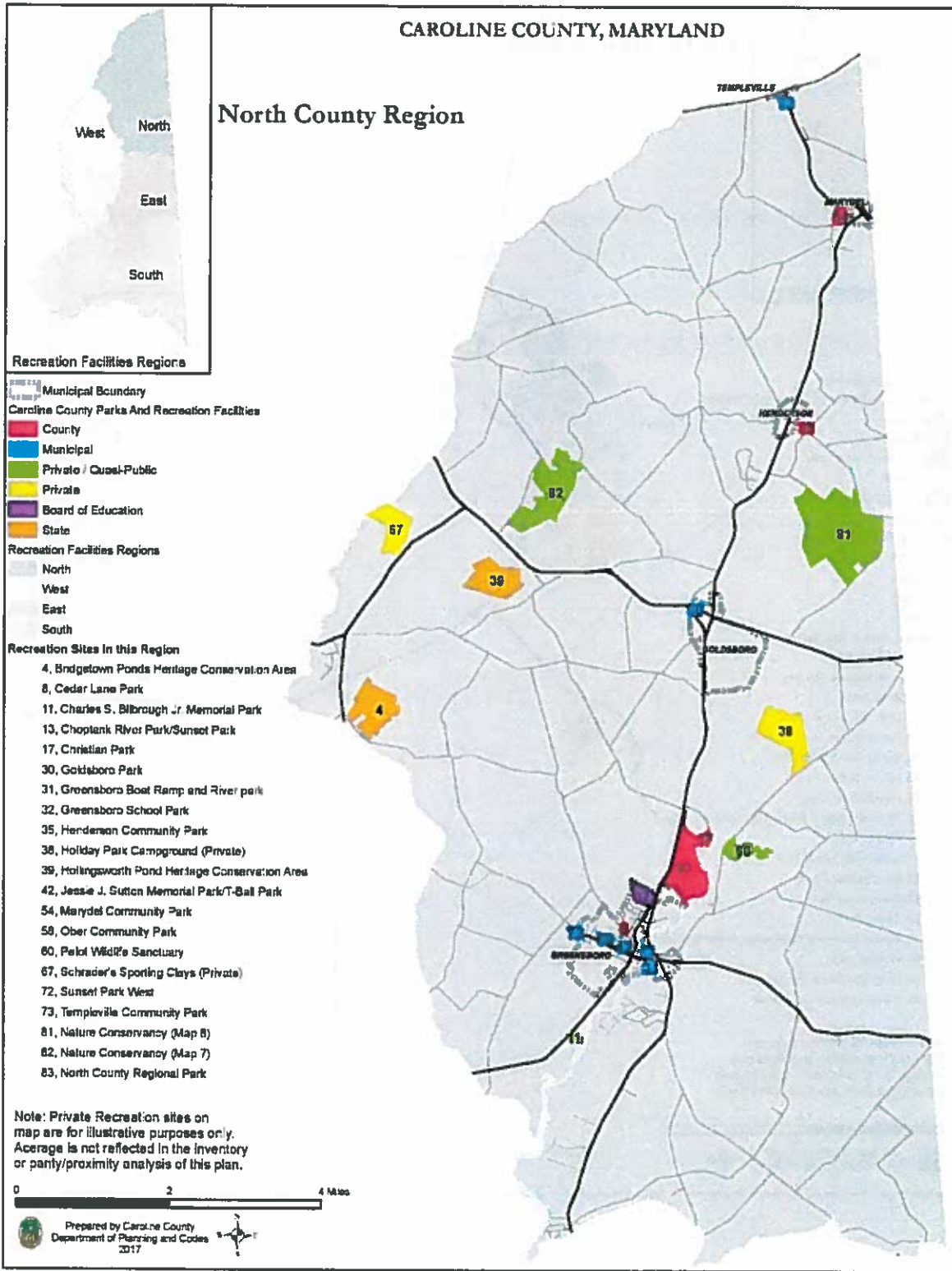
- (1) expand the scope of the GIS park asset inventory to include non-county owned, but publicly managed and maintained park and recreation facilities, starting in the south county region, and
- (2) refine the data input and mapping details to contribute to the accuracy and application of the State’s Park Parity Model.

The balance of the projects reflected in the Annual Plan Table on pp.2 represent projects with POS grant allocations and detailed project outlines. They referenced in FY2017 and the 2016 Annual Program Plans.

DISTRIBUTION OF FUNDS SUMMARY TABLE (Includes proposed and current projects, # times \$1,000)

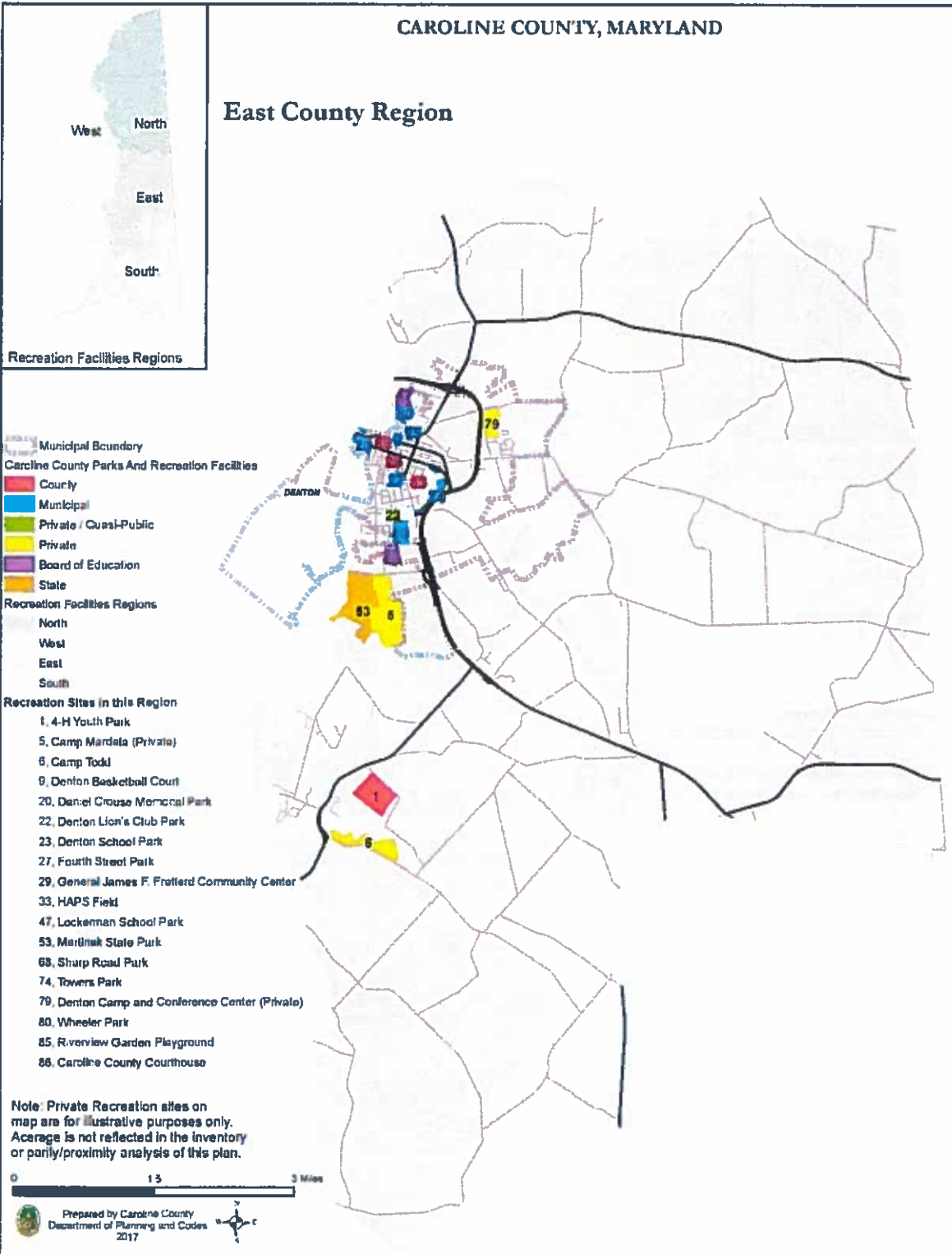
County Region	POS	General Fund	Other	Regional TOTAL
North	285.25	25.5	10	320.75
East	212.5		2.5	215
West	25		2.5	27.5
South	280.1	1	36.39	317.49
Planning	25			25
TOTAL	827.85	26.6	51.39	905.74

COUNTY LOCATION MAPS THAT FOLLOW are excerpts from the 2016 Caroline Land Preservation, Parks and Recreation Plan.



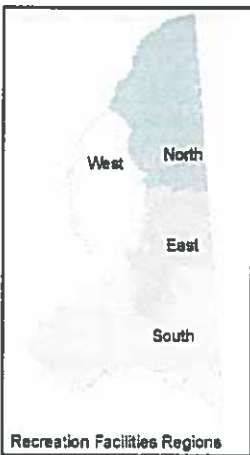
CAROLINE COUNTY, MARYLAND

East County Region



CAROLINE COUNTY, MARYLAND

South County Region



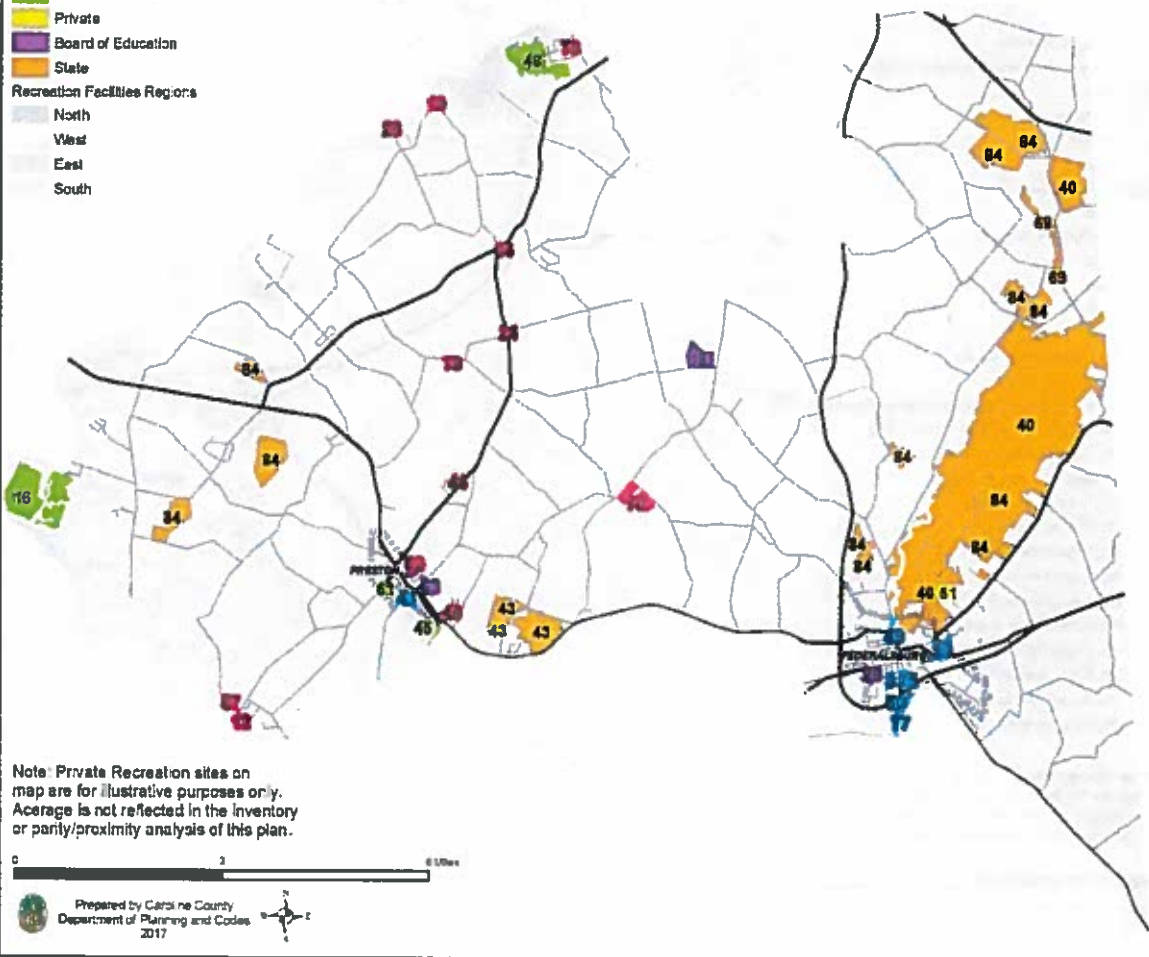
Recreation Facilities Regions

- Municipal Boundary
 - Caroline County Parks And Recreation Facilities
 - County
 - Municipal
 - Private / Quasi-Public
 - Private
 - Board of Education
 - State
- Recreation Facilities Regions
- North
 - West
 - East
 - South

Recreation Sites In this Region

- 3, Austin Avenue Playground
- 10, Chambers Park
- 12, Choptank Marina
- 15, Choptank Wetlands Preserve
- 16, Colonel Richardson High School
- 19, Colonel Richardson Tomb / G&P's Point
- 24, Dickinson's Tomb
- 25, Federalsburg Marina Park
- 25, Federalsburg School Park
- 28, Ganey's Wharf
- 34, Harmony Community Park
- 40, Idylwild Wildlife Management Area
- 41, James T. Wright Memorial Park
- 43, John S Ayton Tree Nursery
- 44, Jonestown Community Park

- 45, Linchester Mill
- 46, Linchester Mill Pond
- 48, Lynch Preserve (Private)
- 49, Marshhope Rec Area North
- 50, Marshhope Rec Area South
- 51, Marshhope Rod and Gun Club (Private)
- 61, Preston Lions Club Park
- 62, Preston School Baseball Field
- 63, Preston School Park
- 69, Smithville Community Lake
- 70, South County Athletic Field Complex
- 76, Two Johns Landing
- 77, VFW Boat Ramp
- 78, Webb Fluharty Cabin
- 84, Chesapeake Forest Lands
- 87, Choptank Nature Park



CAROLINE COUNTY, MARYLAND

West County Region

